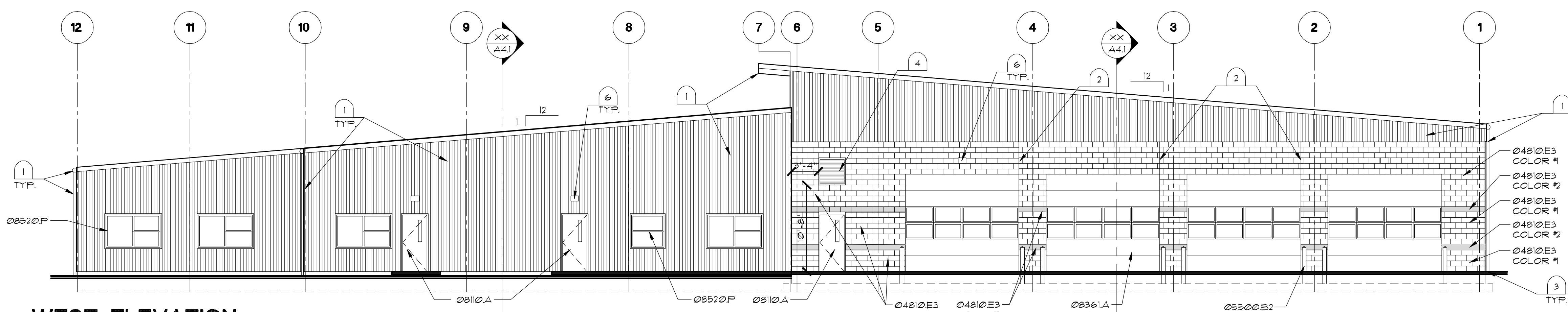
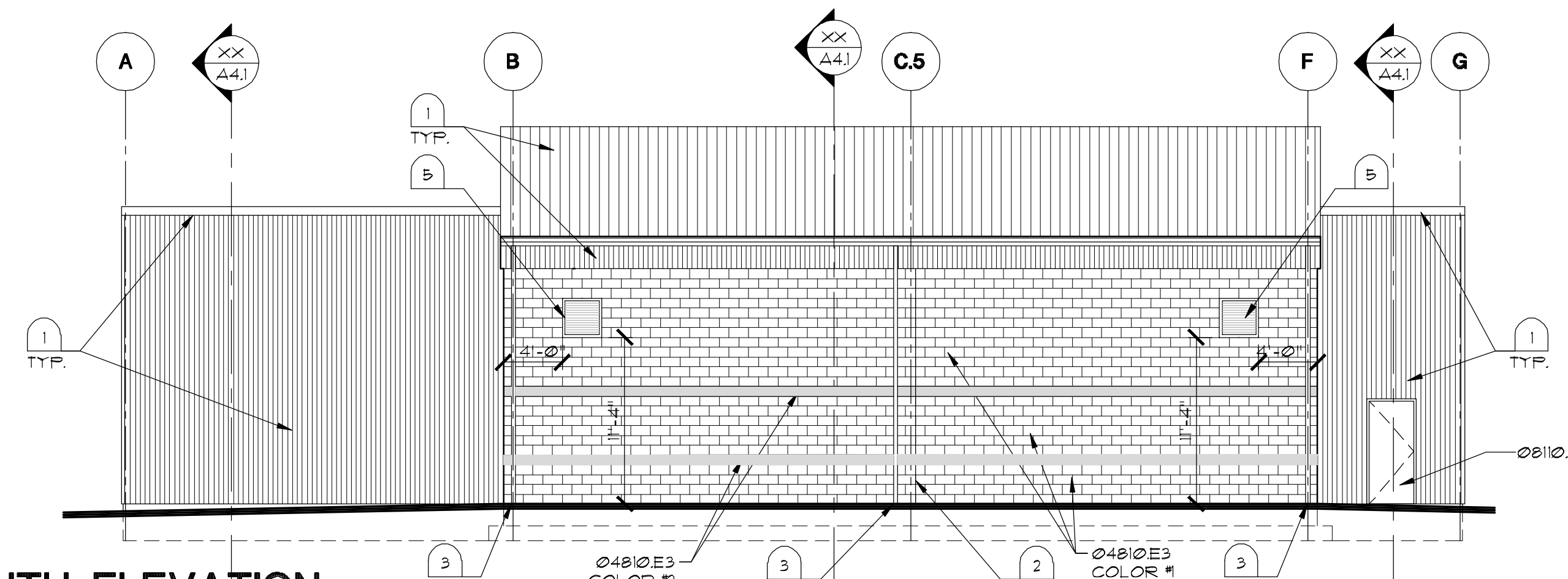


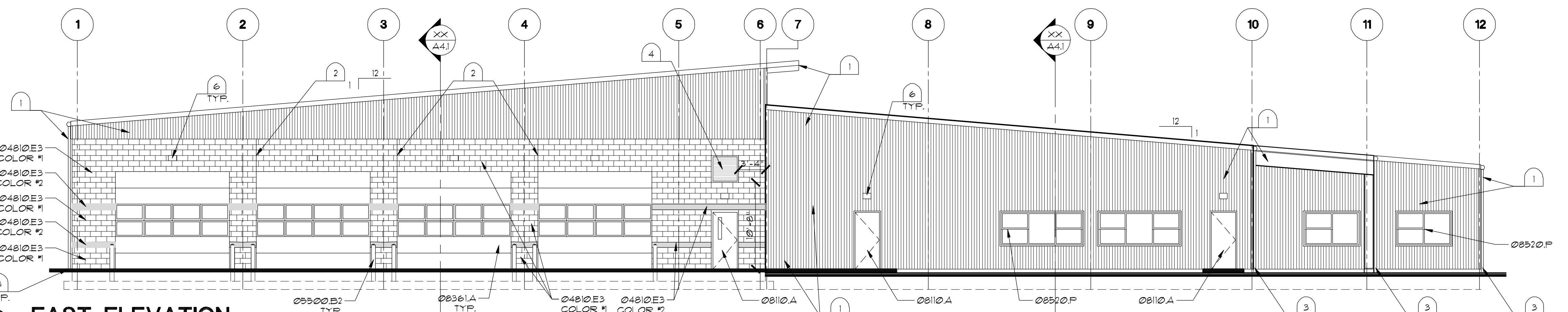
**A1** NORTH ELEVATION  
SCALE: 1/8" = 1'-0"



**B1** WEST ELEVATION  
SCALE: 1/8" = 1'-0"



**XX** SOUTH ELEVATION  
SCALE: 1/8" = 1'-0"



**D1** EAST ELEVATION  
SCALE: 1/8" = 1'-0"

**CONDOC**

- 04810 UNIT MASONRY  
04810E3 8"X8"X16 CONCRETE MASONRY UNIT.
- 05500 METAL FABRICATIONS  
05500B2 6" DIA. STEEL PIPE BOLLARD, CONC. FILLED.
- 0810 STEEL DOORS AND FRAMES  
0810A STEEL DOOR, SEE DOOR SCHEDULE.
- 08361 SECTIONAL OVERHEAD DOORS  
08361A SECTIONAL OVERHEAD DOOR.
- 0841 ALUMINUM ENTRANCES & STOREFRONTS  
0841A ALUMINUM ENTRANCE DOORS.  
0841B ALUMINUM STOREFRONT FRAMING.
- 08520 ALUMINUM WINDOWS (PRE-FAB UNITS)  
08520P ALUMINUM WINDOW, SEE WINDOW TYPES.

**KEYNOTES**

- 1 PRE-ENGINEERED METAL BUILDING SYSTEM, OWNER FURNISHED, CONTRACTOR INSTALLED.
- 2 CMU CONTROL JOINT. SEE DETAIL D3/AB2.
- 3 DOWN SPOUT TIE IN SEE DETAIL AB/AB3.
- 4 40"X40" MECHANICAL LOUVER. SEE MECHANICAL DRAWINGS. SEE DETAIL XXXXX
- 5 32"X32" MECHANICAL LOUVER. SEE MECHANICAL DRAWINGS. SEE DETAIL XXXXX
- 6 LIGHT FIXTURE, SEE ELECTRICAL DRAWINGS.

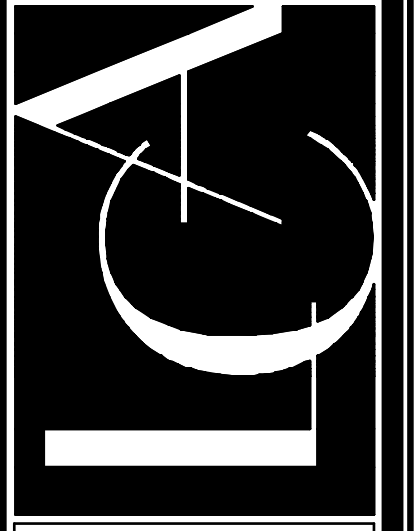
**MASONRY COLOR LEGEND**

- MASONRY COLOR #1 - "MESA TAN" SMOOTH STANDARD FACE AS MANUFACTURED BY BASALITE
- MASONRY COLOR #2 - "NATURAL" SMOOTH STANDARD FACE AS MANUFACTURED BY BASALITE

**GENERAL NOTES**

1. INSTALL WATER REPELLENT (07190) ON ALL EXTERIOR CONCRETE MASONRY.
2. INSTALL SEALANT BETWEEN DISSIMILAR MATERIALS IN COLORS THAT APPROXIMATE COLORS OF ADJACENT FINISHES.
3. FOR WINDOW TYPES, SEE SHEET A3.0.
4. SHADED CMU INDICATES CMU COLOR 2. NON-SHADED CMU AREAS INDICATE CMU COLOR 1. (04810)
5. SEE SHEET AU FOR DOWN SPOUT TIE-IN INFORMATION.
6. ALL EXPOSED METAL FABRICATIONS SHALL BE PAINTED.

**LCA Architects, P.A., P.C.**  
ARCHITECTURE - PLANNING - INTERIOR DESIGN  
1221 Shoreline Lane  
Bessemer, Idaho 83702  
PHONE: (208) 345-0677 - FAX: (208) 344-9002  
COPYRIGHT 2007. All rights reserved. Information on this drawing is the property of LCA Architects, P.A., P.C. and shall not be reproduced or transmitted in any form or by any means, electronic, mechanical, photocopying, recording, or by any information storage and retrieval system, without prior written permission.



**CLARK COUNTY FIRE DISTRICT 9  
STATION 9-1  
CLARK COUNTY, WASHINGTON**  
EXTERIOR ELEVATIONS

TASK	DATE	DESCRIPTION

JOB NO.: 0403.07  
DATE: 07-12-06  
DRAWN BY: BPF  
CHK'D BY: SBC

SHEET NO.  
**A4.0**